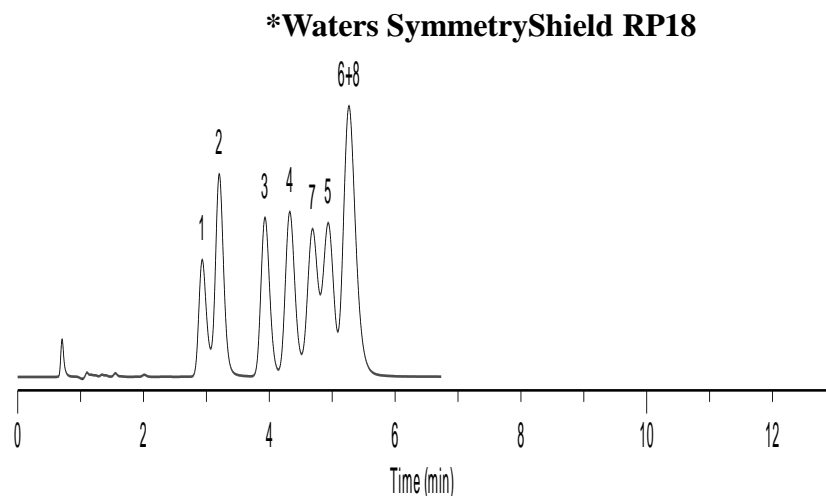
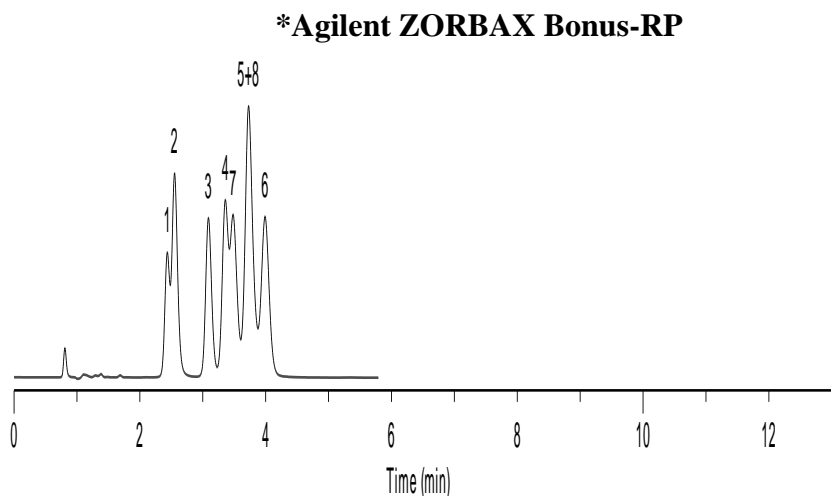
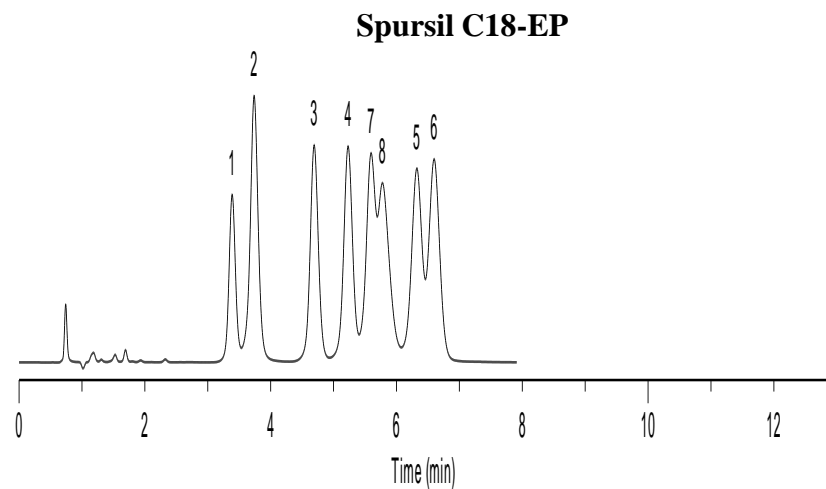
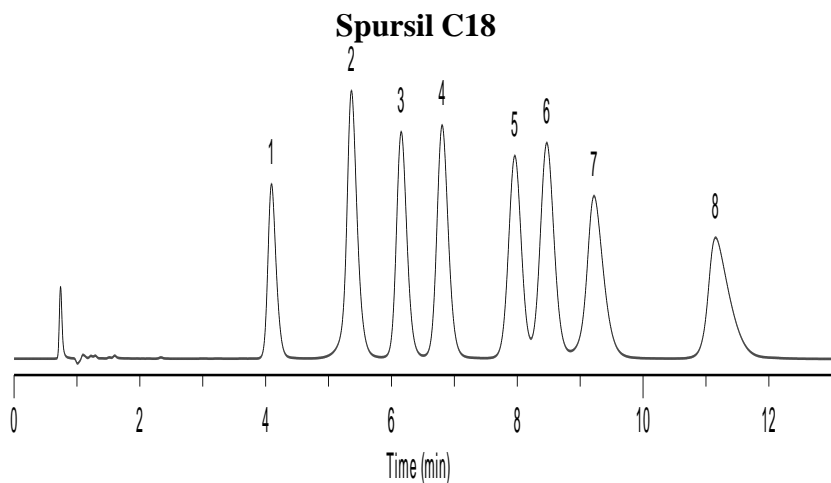
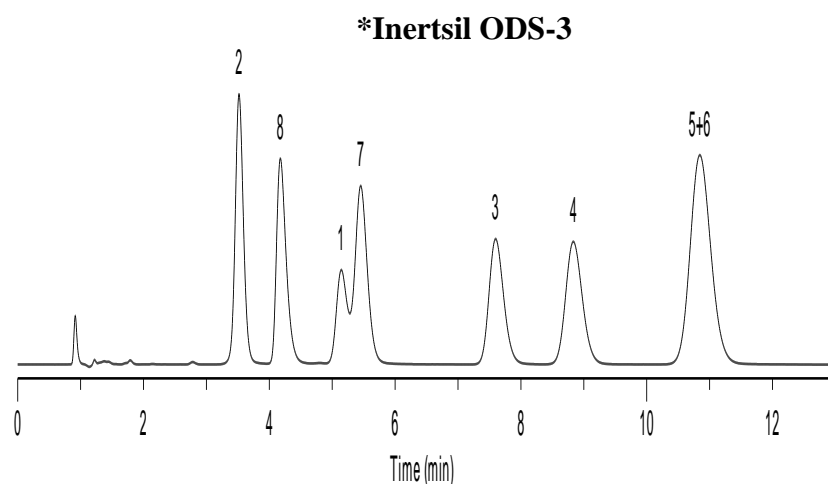
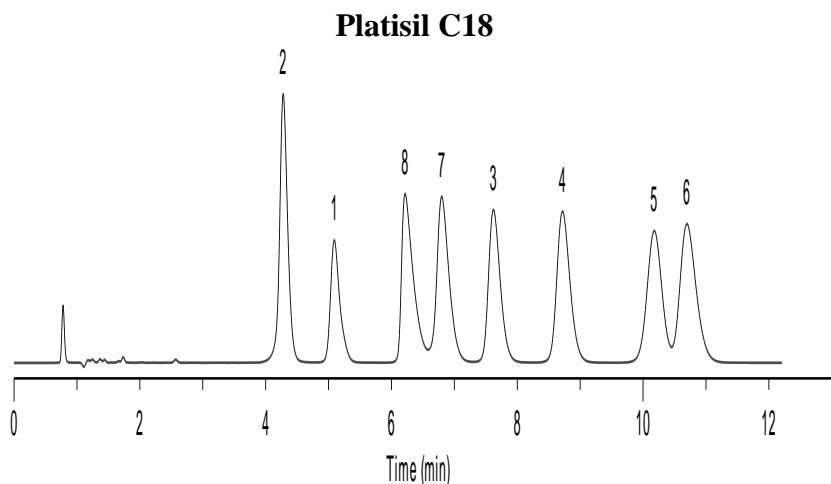
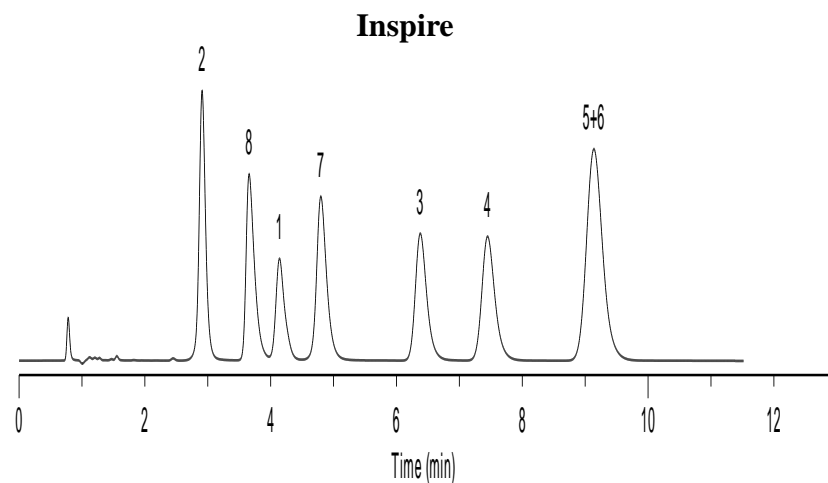
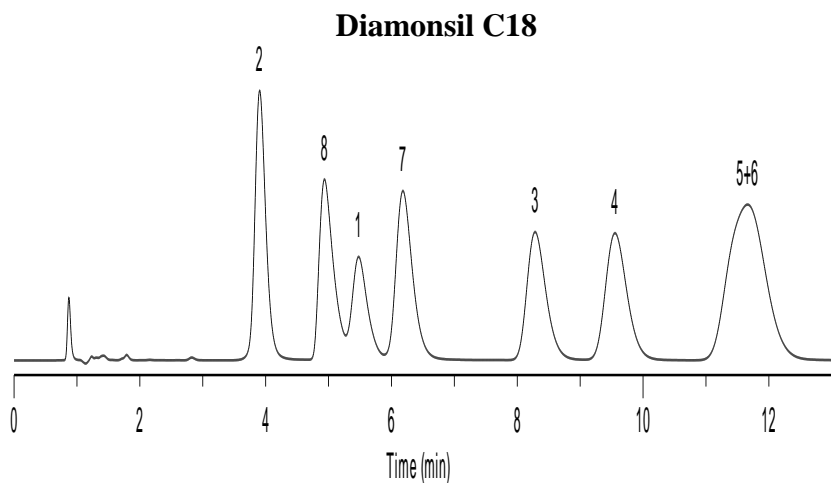


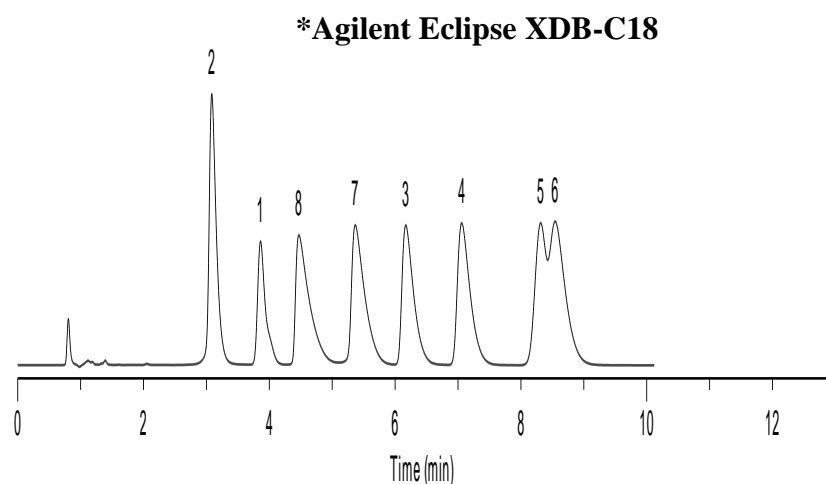
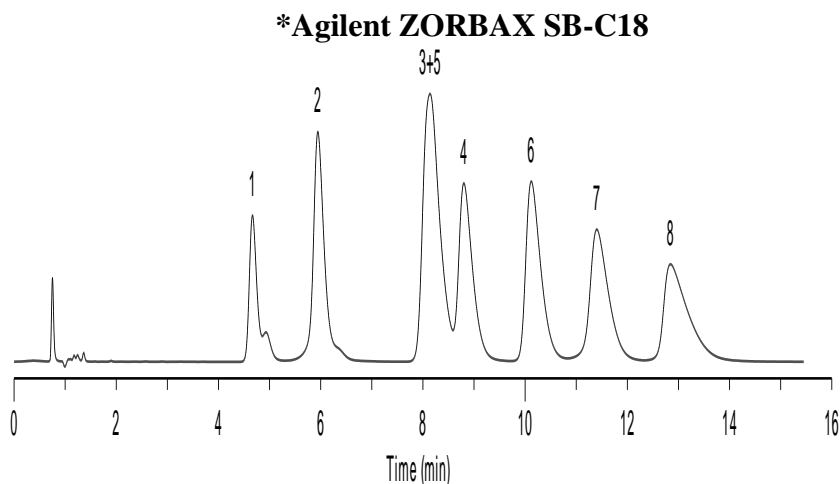
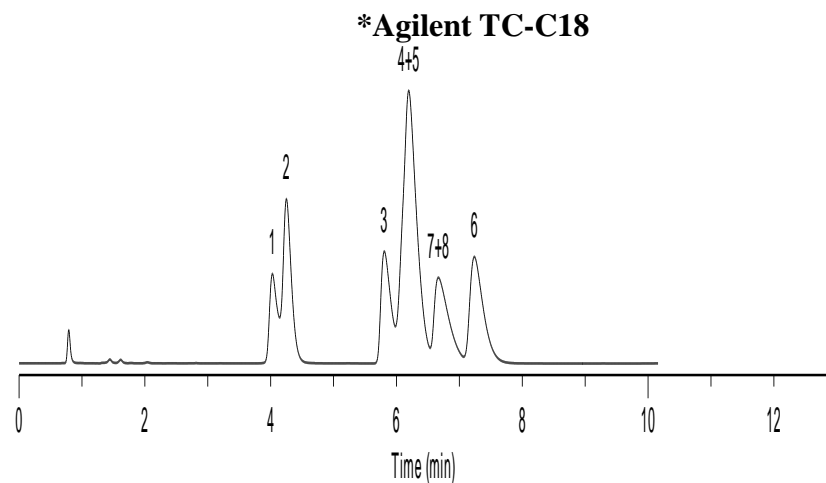
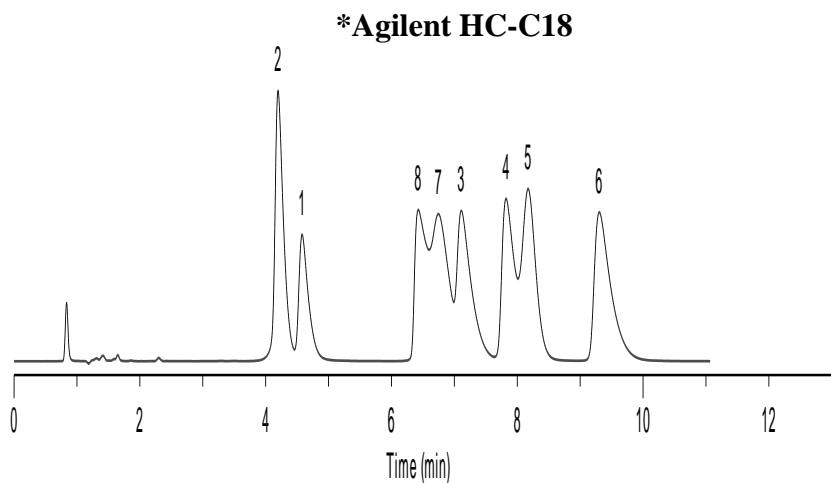
## TCA<sub>s</sub> (High pH)

<b>Columns:</b>	<b>Listed on chromatograms</b>
<b>Dimensions:</b>	<b>150 × 4.6mm ID, 5 μm(all columns)</b>
<b>Mobile Phase:</b>	<b>MeOH: 5mM NH<sub>4</sub>HCO<sub>3</sub>(pH=10.0)=80:20</b>
<b>Flow Rate:</b>	<b>1.5ml/min</b>
<b>Temperature:</b>	<b>Ambient</b>
<b>Detection:</b>	<b>UV 254nm</b>
<b>Sample:</b>	<b>1. Doxepin</b>
	<b>2. Nordoxepin</b>
	<b>3. Imipramine</b>
	<b>4. Amitriptyline</b>
	<b>5. Trimipramine</b>
	<b>6. Clomipramine</b>
	<b>7. Nortriptyline</b>
	<b>8. Protriptyline</b>

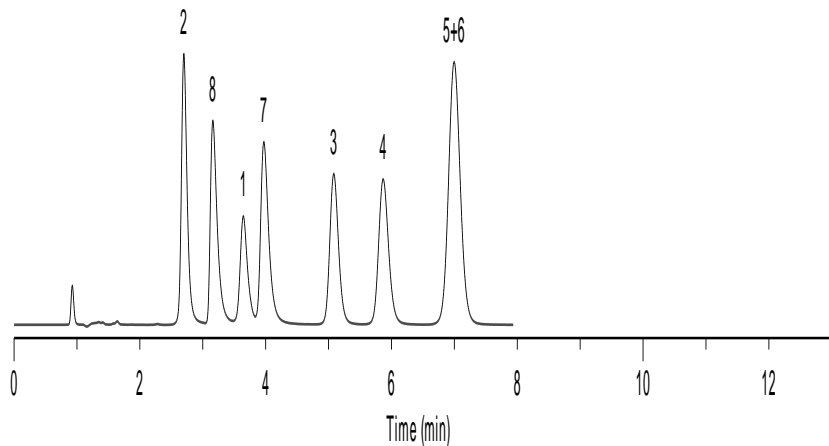
\*ZORBAX,HC,TC,Eclipse,Hypersil are registered trademarks of Agilent Technologies.Gemini,Luna are registered trademarks of Phenomenex.Symmetry,XBridge are registered trademarks of Waters Corporation.Inertsil is registered trademark of GL Sciences Inc.Kromasil is registered trademark of Eka Chemicals.BECKMAN Coulter is registered trademark of Beckman Coulter, Inc. SMT is registered trademark of Analtech Inc.Dikma Technologies is not affiliated with the above companies.



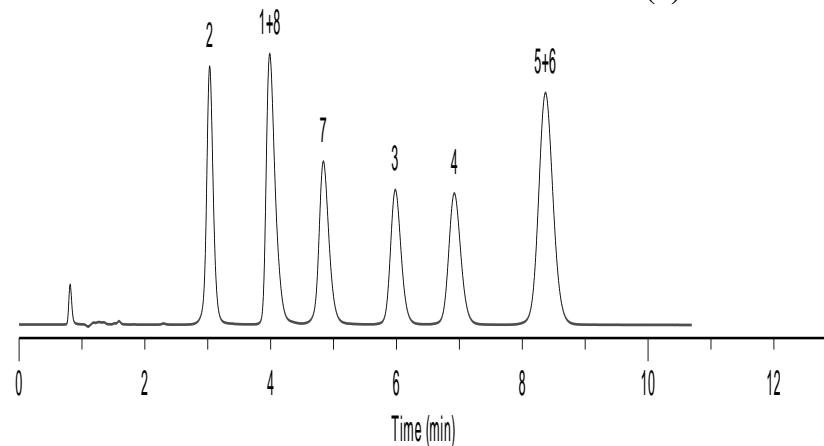




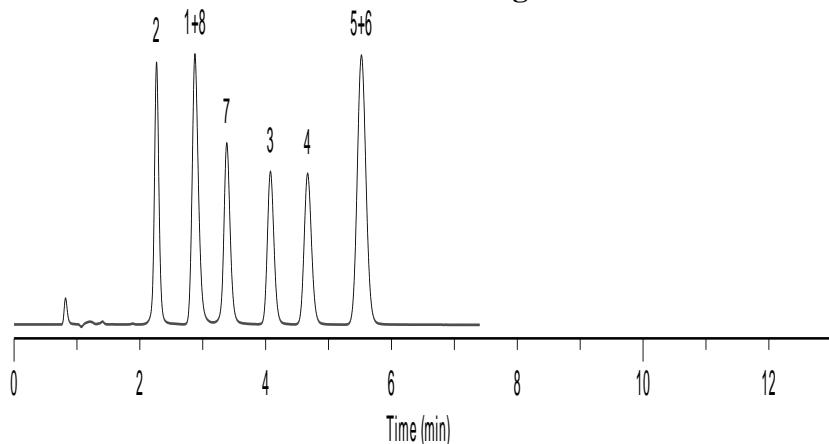
**\*Phenomenex Gemini C18**



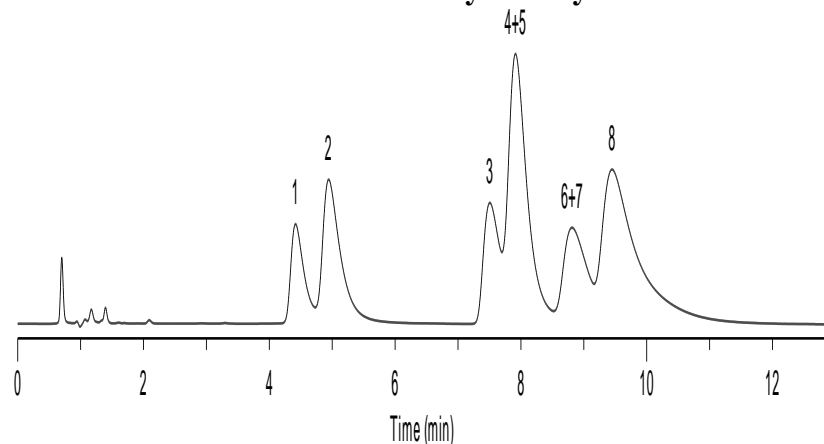
**\*Phenomenex Luna C18(2)**



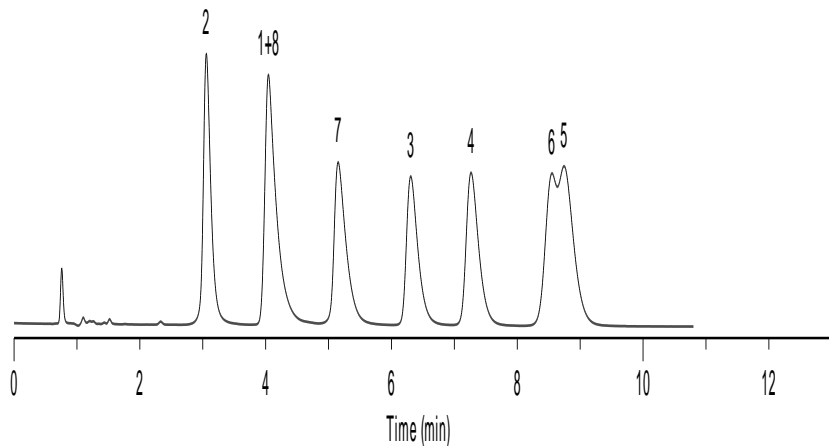
**\*Waters XBridge C18**



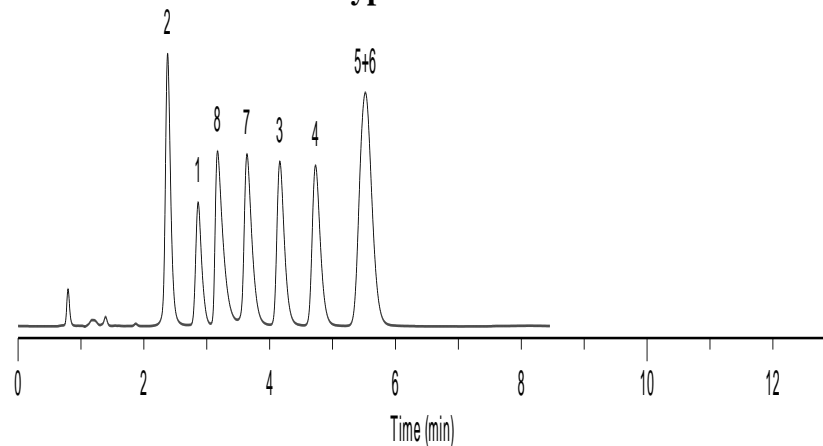
**\*Waters Symmetry C18**



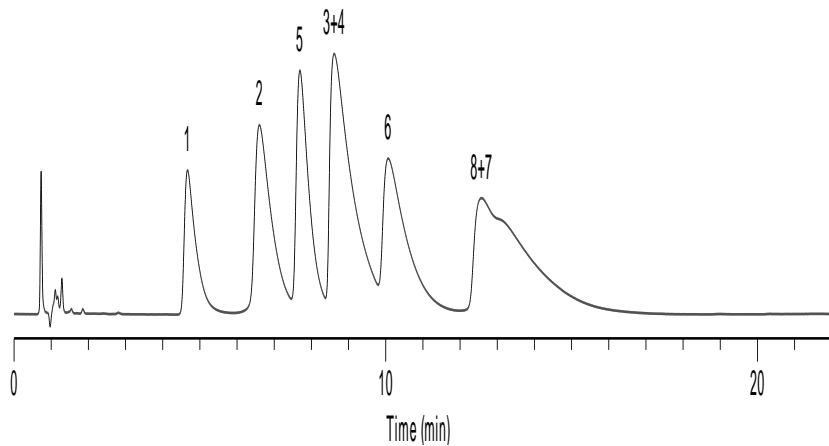
**\*Kromasil C18**



**\*Hypersil BDS C18**



**\*BECKMAN Coulter C18**



**\*SMT C18**

